

SILICON VALLEY'S AIRPORT



9/11/2020

City of San Jose Construction Crane Policy Update

Meeting Objectives



- To Review, Clarify, and Add to Construction Stakeholder Input Received To Date
- Existing Air Service (OEI) Protection with FAA Modifications Map
- Timeline

Types of cranes used for City projects? Determination on what type of crane to use?



"A-frame" hammerhead cranes (Image: Liebherr)



Flat top hammerhead crane (Image: Terex)



Luffing crane (Image: Cranemag.com)

- cost • schedule • height of structure • maximum weight to be lifted
- availability • multiple crane requirement • space around site • reach
- *Have hammerhead & luffing cranes been considered for your project? Why/why not?*

Mobile Cranes

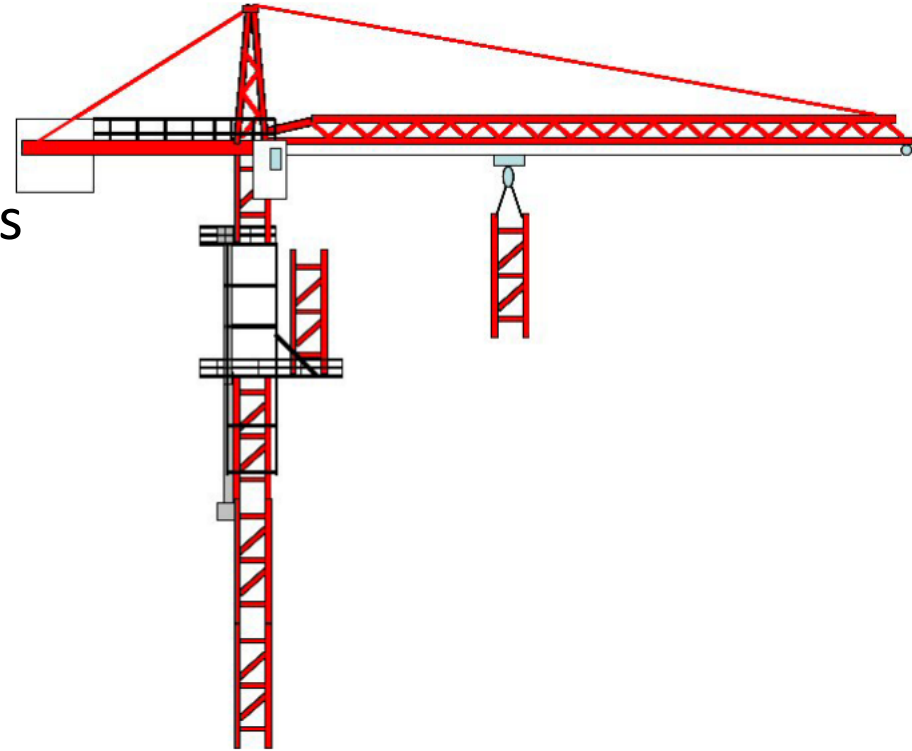


- *Can you use a mobile crane in your project at the beginning or at the end stages of construction?*
- *How much height is required above the top of building?*
- *What is the typical duration of use for a mobile crane?*
- *What is the time required to raise/lower?*

Complications in adding multiple jumps for each project crane?



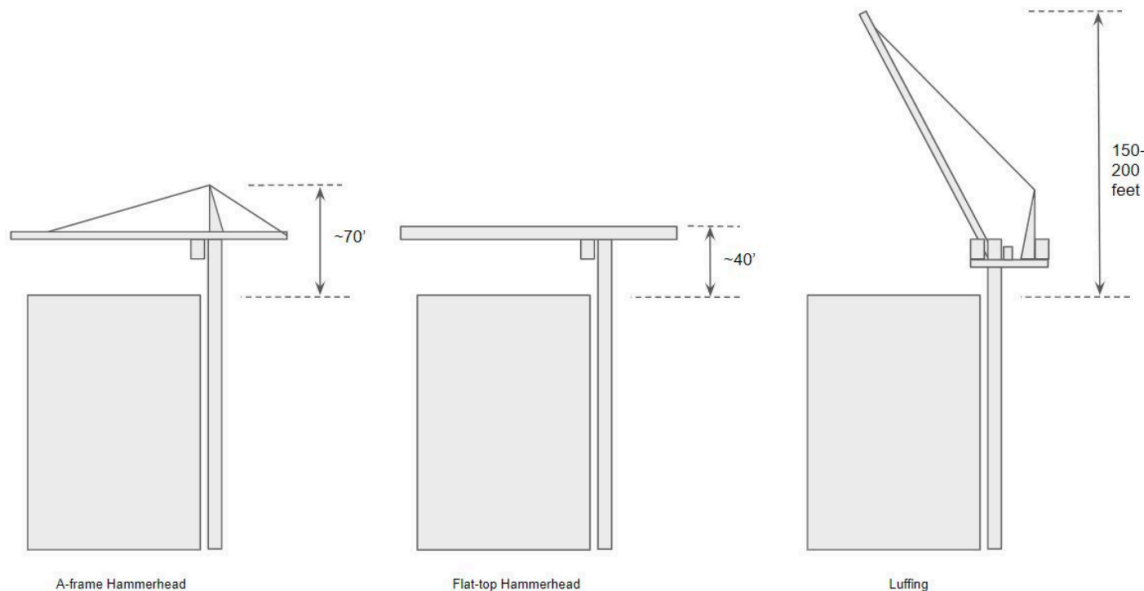
- Raised/lowered in 19-20' sections
- 1 day to raise/lower a section
- Completed on weekends
- Increased cost/schedule
- Structural tie-ins



- *Would you incorporate multiple jumps into your project to minimize the duration your crane is at its maximum height?*

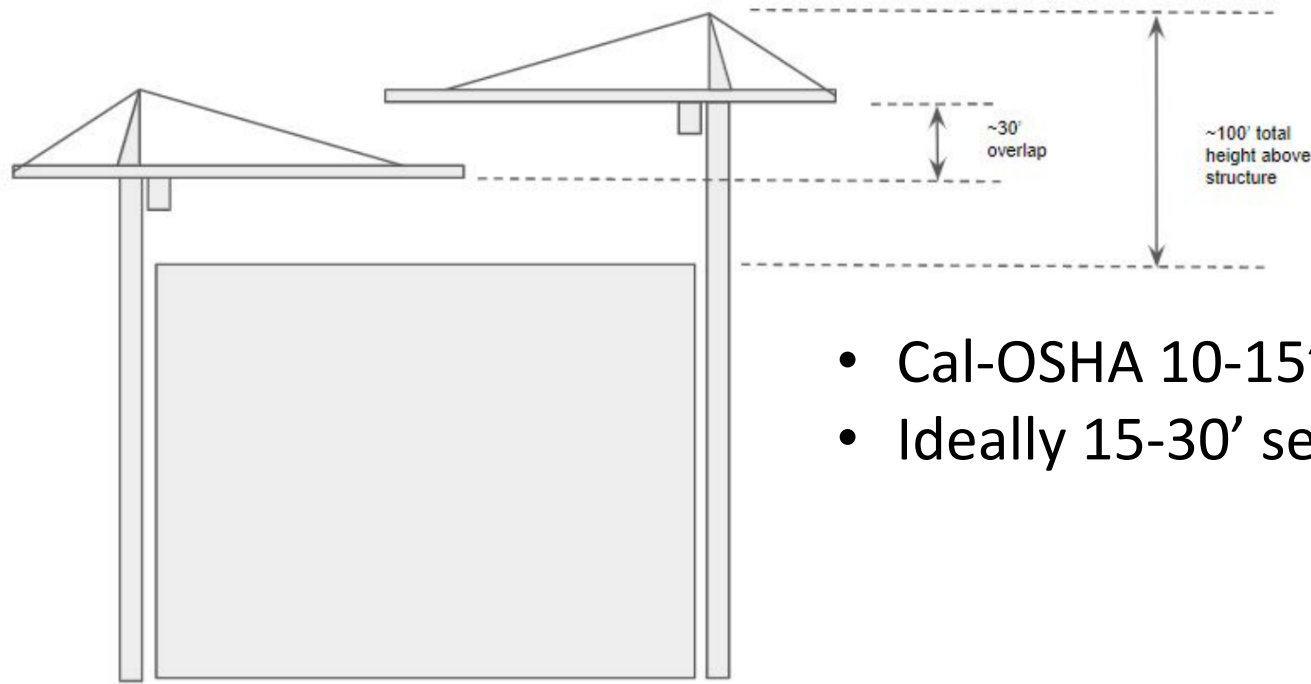
Typical vertical clearance required between crane and top of building height? Variables?

- Clearance 30-50'
(Depends on type of crane used)
- Largest material to be lifted
- Crane load capacity
- Multiple cranes



- *For your specific project, what is the absolute minimum vertical clearance between the top of building height and lowest point on crane? Explain why?*
- *Can you reduce vertical clearance by using a different type of crane pictured above?*

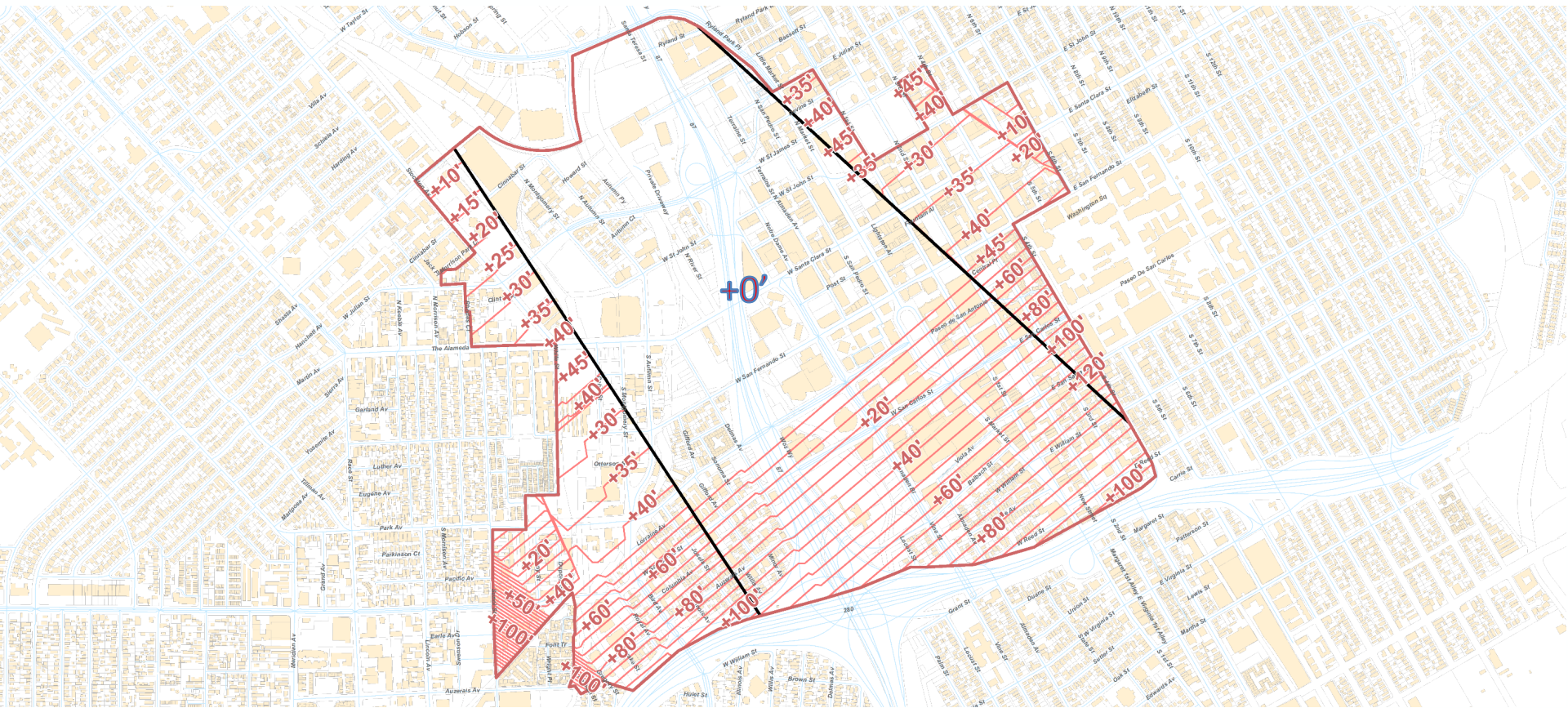
Typical vertical/horizontal separation required between Multiple cranes/jibs?



- Cal-OSHA 10-15' minimum
- Ideally 15-30' separation

- *What is the absolute minimum vertical separation that would allow you to build your project? Explain why?*
- *Is there a point in your project at which you can remove one crane and lower the second crane?*

Air Service (OEI) Protection with FAA Modifications



- ❖ Heights above and represent additional height above existing Downtown Building Height Limits

Crane Policy Timeline



October 16 th 2020 8:00 – 9:00 a.m.	PBCE Developers Roundtable
October 2020	Special Airport Developers Roundtable <i>Preliminary Staff Recommendations</i>
November 2020	Special Airport Developers Roundtable <i>Refined/Completed Draft Staff Recommendations</i>
December 2020	Council Action

- Presentation & Zoom Recording to be posted at www.flysjc.com/downtownheightlimits on 9/14.

Airport Planning & Development

Cary Greene / Ryan Sheelen

Cgreene@sjc.org / rsheelen@sjc.org

408-392-3623 / 408-392-1193