

Via Hand-Delivery

March 24, 2015

Ms. Katherine Kennedy
 Airports District Office
 Federal Aviation Administration
 1000 Marina Boulevard, Suite 220
 Brisbane, CA 94005

Subject: Final ALP Property Map & Exhibit A for SJC

Dear Katherine:

SJC is pleased to submit its final Exhibit 'A' Airport Property Inventory Maps for requested FAA acceptance. A completed "Exhibit 'A' Review Checklist" is also enclosed.

The composite Property Map/Exhibit A consists of 6 drawings prepared with the technical assistance of the aviation consulting firm of Landrum & Brown based on extensive records research conducted by SJC and other City of San Jose staff:

Sheet 1.	Map displaying all 103 County Assessor parcels currently comprising SJC and other City of San Jose land acquired for SJC purposes, plus database for the individual land acquisitions dating back to 1941 that now form the 39 on-airport parcels.
Sheet 2&3.	Database for the 600+ individual land acquisitions that now form the 64 off-airport parcels acquired for SJC approach protection and noise compatibility purposes, including two that have been surplus.
Sheet 4.	Map displaying all 405 (to date) property easements in the SJC vicinity held by City of San Jose for SJC aviation and noise protection purposes.
Sheet 5&6.	Database for the 405 off-airport property easements.

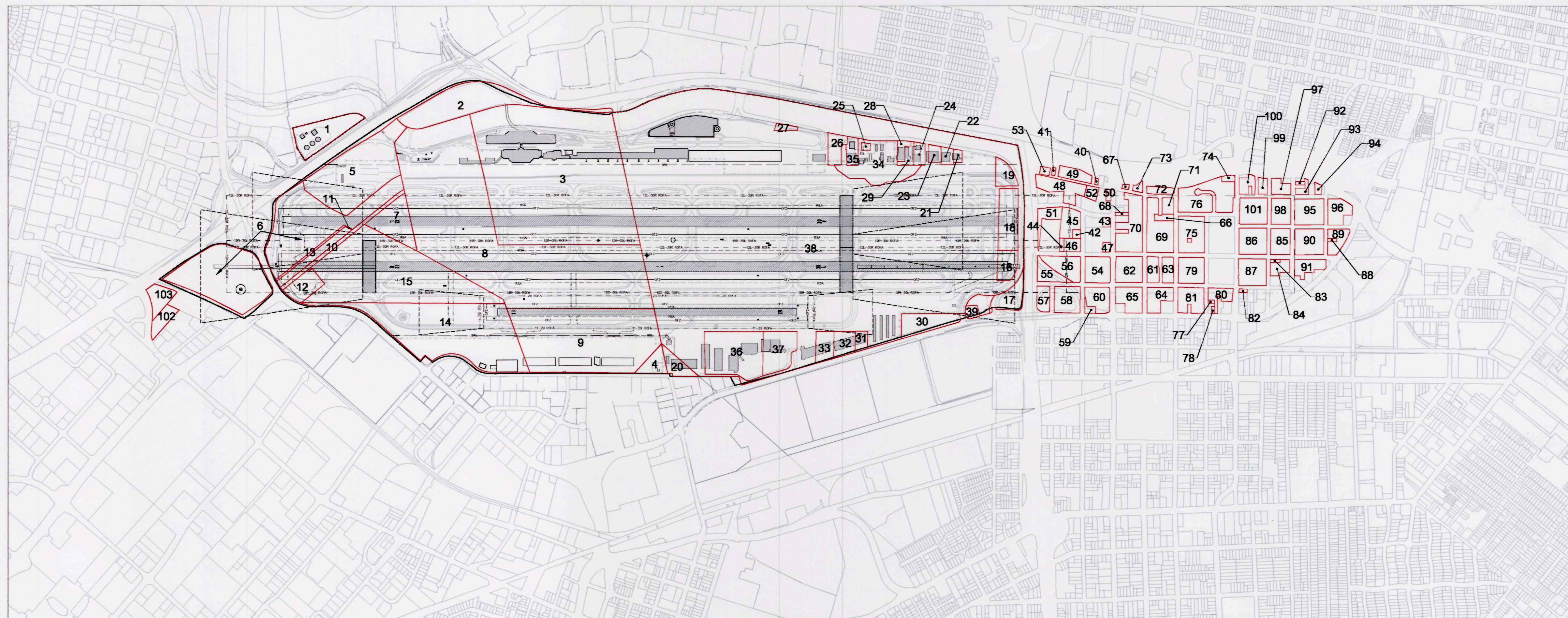
We appreciate the attention and guidance provided by your office during the preparation of this first full Property Map and Exhibit A for SJC, and we look forward to receiving FAA acceptance. Please feel free to contact me at 408-392-3623 or cgreene@sjc.org for any questions or clarification.

Sincerely,



Cary Greene
 Airport Planner

Enclosures



LEGEND

	EXISTING	ULTIMATE
PARCEL	#	■
AIRPORT BOUNDARY	-----	-----
RUNWAY PAVEMENT	=====	=====
TAXIWAY PAVEMENT	=====	=====
BUILDING RESTRICTION LINE (BRL)	-----	-----
RUNWAY SAFETY AREA (RSA)	-----	-----
OBSTACLE FREE ZONE (CFZ)	-----	-----
RUNWAY OBJECT FREE AREA (ROFA)	-----	-----
RUNWAY PROTECTION ZONE (RPZ)	-----	-----
FENCING	-----	-----
BUILDING	-----	-----
AIRPORT REFERENCE POINT (ARP)	+	+
BLAST FENCE	-----	-----
PRECISION OBSTACLE FREE ZONE (POFZ)	-----	-----

- Notes:**
- Parcels 1-39 comprise the Norman Y. Mineta San Jose International Airport, owned and operated by City of San Jose. Off-airport Parcels 40-101 are owned by City of San Jose for joint airport approach zone protection/noise compatibility purposes. Parcels 102-103 are disposed property formerly owned by City of San Jose for airport noise compatibility purposes.
 - The "Document Record" numbers listed in the parcel database tables serve as the County of Santa Clara Recorder's Office official legal reference for the recorded property acquisition documents and associated component legal descriptions.
 - All Airport property was purchased by grant deed and owned in fee simple by City of San Jose.
 - Airport boundary bearings and distances are contained in the Record Of Survey recorded in the Office of the County Recorder, Santa Clara County, State of California, on May 11, 1979 in Book 441 of Maps at Pages 20-27, Document Record No. 6372225.

APPROVAL BLOCK
 San Jose International Airport
 City of San Jose, California
 [Signature]
 APPROVED BY
 DATE 3/20/15

On-Airport Parcel Database

Map #	County Parcel #	Purchase Date	Document Record #	Grantor	Acreage	Federal Grant	Purpose	Current Use	Encumbrances
1	101-03-000	4/22/1951	103060	None	8.54	none	airport development	aviation support facilities	Highway easement (California); ground lease (SJC Fuel Co.)
2	200-01-000	7/18/1951	502980	State of California	18.52	none	-	aviation support facilities	Highway easement (POMES)
3	200-02-000	5/25/1952	147273	Duke	6	FAAP-10	-	aviation support facilities	none
4	200-02-007	1/10/1958	148758	San Jose	20	FAAP-10	-	aviation support facilities	none
5	200-02-021	1/10/1958	1538114-1538116	San Jose	14.08	FAAP-10	-	aviation support facilities	none
6	200-02-022	1/10/1958	1538117	San Jose	14.08	FAAP-10	-	aviation support facilities	none
7	200-02-024	1/10/1958	1538118	San Jose	14.08	FAAP-10	-	aviation support facilities	none
8	200-02-026	1/10/1958	1538119	San Jose	14.08	FAAP-10	-	aviation support facilities	none
9	200-02-028	1/10/1958	1538120	San Jose	14.08	FAAP-10	-	aviation support facilities	none
10	200-02-030	1/10/1958	1538121	San Jose	14.08	FAAP-10	-	aviation support facilities	none
11	200-02-032	1/10/1958	1538122	San Jose	14.08	FAAP-10	-	aviation support facilities	none
12	200-02-034	1/10/1958	1538123	San Jose	14.08	FAAP-10	-	aviation support facilities	none
13	200-02-036	1/10/1958	1538124	San Jose	14.08	FAAP-10	-	aviation support facilities	none
14	200-02-038	1/10/1958	1538125	San Jose	14.08	FAAP-10	-	aviation support facilities	none
15	200-02-040	1/10/1958	1538126	San Jose	14.08	FAAP-10	-	aviation support facilities	none
16	200-02-042	1/10/1958	1538127	San Jose	14.08	FAAP-10	-	aviation support facilities	none
17	200-04-008	4/20/1958	148020	Ellis	2.43	FAAP-10	-	aviation support facilities	Highway easement (VTA/California)
18	200-25-004	5/17/1958	147222	California	2.43	FAAP-10	-	aviation support facilities	none
19	200-25-005	5/17/1958	147223	California	2.43	FAAP-10	-	aviation support facilities	none
20	200-25-006	5/17/1958	147224	California	2.43	FAAP-10	-	aviation support facilities	none
21	200-25-007	5/17/1958	147225	California	2.43	FAAP-10	-	aviation support facilities	none
22	200-25-008	5/17/1958	147226	California	2.43	FAAP-10	-	aviation support facilities	none
23	200-25-009	5/17/1958	147227	California	2.43	FAAP-10	-	aviation support facilities	none
24	200-25-010	5/17/1958	147228	California	2.43	FAAP-10	-	aviation support facilities	none
25	200-25-011	5/17/1958	147229	California	2.43	FAAP-10	-	aviation support facilities	none
26	200-25-012	5/17/1958	147230	California	2.43	FAAP-10	-	aviation support facilities	none
27	200-25-013	5/17/1958	147231	California	2.43	FAAP-10	-	aviation support facilities	none
28	200-25-014	5/17/1958	147232	California	2.43	FAAP-10	-	aviation support facilities	none
29	200-25-015	5/17/1958	147233	California	2.43	FAAP-10	-	aviation support facilities	none
30	200-25-016	5/17/1958	147234	California	2.43	FAAP-10	-	aviation support facilities	none
31	200-25-017	5/17/1958	147235	California	2.43	FAAP-10	-	aviation support facilities	none
32	200-25-018	5/17/1958	147236	California	2.43	FAAP-10	-	aviation support facilities	none
33	200-25-019	5/17/1958	147237	California	2.43	FAAP-10	-	aviation support facilities	none
34	200-25-020	5/17/1958	147238	California	2.43	FAAP-10	-	aviation support facilities	none
35	200-25-021	5/17/1958	147239	California	2.43	FAAP-10	-	aviation support facilities	none
36	200-25-022	5/17/1958	147240	California	2.43	FAAP-10	-	aviation support facilities	none
37	200-25-023	5/17/1958	147241	California	2.43	FAAP-10	-	aviation support facilities	none
38	200-25-024	5/17/1958	147242	California	2.43	FAAP-10	-	aviation support facilities	none
39	200-25-025	5/17/1958	147243	California	2.43	FAAP-10	-	aviation support facilities	none
40	200-25-026	5/17/1958	147244	California	2.43	FAAP-10	-	aviation support facilities	none
41	200-25-027	5/17/1958	147245	California	2.43	FAAP-10	-	aviation support facilities	none
42	200-25-028	5/17/1958	147246	California	2.43	FAAP-10	-	aviation support facilities	none
43	200-25-029	5/17/1958	147247	California	2.43	FAAP-10	-	aviation support facilities	none
44	200-25-030	5/17/1958	147248	California	2.43	FAAP-10	-	aviation support facilities	none
45	200-25-031	5/17/1958	147249	California	2.43	FAAP-10	-	aviation support facilities	none
46	200-25-032	5/17/1958	147250	California	2.43	FAAP-10	-	aviation support facilities	none
47	200-25-033	5/17/1958	147251	California	2.43	FAAP-10	-	aviation support facilities	none
48	200-25-034	5/17/1958	147252	California	2.43	FAAP-10	-	aviation support facilities	none
49	200-25-035	5/17/1958	147253	California	2.43	FAAP-10	-	aviation support facilities	none
50	200-25-036	5/17/1958	147254	California	2.43	FAAP-10	-	aviation support facilities	none
51	200-25-037	5/17/1958	147255	California	2.43	FAAP-10	-	aviation support facilities	none
52	200-25-038	5/17/1958	147256	California	2.43	FAAP-10	-	aviation support facilities	none
53	200-25-039	5/17/1958	147257	California	2.43	FAAP-10	-	aviation support facilities	none
54	200-25-040	5/17/1958	147258	California	2.43	FAAP-10	-	aviation support facilities	none
55	200-25-041	5/17/1958	147259	California	2.43	FAAP-10	-	aviation support facilities	none
56	200-25-042	5/17/1958	147260	California	2.43	FAAP-10	-	aviation support facilities	none
57	200-25-043	5/17/1958	147261	California	2.43	FAAP-10	-	aviation support facilities	none
58	200-25-044	5/17/1958	147262	California	2.43	FAAP-10	-	aviation support facilities	none
59	200-25-045	5/17/1958	147263	California	2.43	FAAP-10	-	aviation support facilities	none
60	200-25-046	5/17/1958	147264	California	2.43	FAAP-10	-	aviation support facilities	none
61	200-25-047	5/17/1958	147265	California	2.43	FAAP-10	-	aviation support facilities	none
62	200-25-048	5/17/1958	147266	California	2.43	FAAP-10	-	aviation support facilities	none
63	200-25-049	5/17/1958	147267	California	2.43	FAAP-10	-	aviation support facilities	none
64	200-25-050	5/17/1958	147268	California	2.43	FAAP-10	-	aviation support facilities	none
65	200-25-051	5/17/1958	147269	California	2.43	FAAP-10	-	aviation support facilities	none
66	200-25-052	5/17/1958	147270	California	2.43	FAAP-10	-	aviation support facilities	none
67	200-25-053	5/17/1958	147271	California	2.43	FAAP-10	-	aviation support facilities	none
68	200-25-054	5/17/1958	147272	California	2.43	FAAP-10	-	aviation support facilities	none
69	200-25-055	5/17/1958	147273	California	2.43	FAAP-10	-	aviation support facilities	none
70	200-25-056	5/17/1958	147274	California	2.43	FAAP-10	-	aviation support facilities	none
71	200-25-057	5/17/1958	147275	California	2.43	FAAP-10	-	aviation support facilities	none
72	200-25-058	5/17/1958	147276	California	2.43	FAAP-10	-	aviation support facilities	none
73	200-25-059	5/17/1958	147277	California	2.43	FAAP-10	-	aviation support facilities	none
74	200-25-060	5/17/1958	147278	California	2.43	FAAP-10	-	aviation support facilities	none
75	200-25-061	5/17/1958	147279	California	2.43	FAAP-10	-	aviation support facilities	none
76	200-25-062	5/17/1958	147280	California	2.43	FAAP-10	-	aviation support facilities	none
77	200-25-063	5/17/1958	147281	California	2.43	FAAP-10	-	aviation support facilities	none
78	200-25-064	5/17/1958	147282	California	2.43	FAAP-10	-	aviation support facilities	none
79	200-25-065	5/17/1958	147283	California	2.43	FAAP-10	-	aviation support facilities	none
80	200-25-066	5/17/1958	147284	California	2.43	FAAP-10	-	aviation support facilities	none
81	200-25-067	5/17/1958	147285	California	2.43	FAAP-10	-	aviation support facilities	none
82	200-25-068	5/17/1958	147286	California	2.43	FAAP-10	-	aviation support facilities	none
83	200-25-069	5/17/1958	147287	California	2.43	FAAP-10	-	aviation support facilities	none
84	200-25-070	5/17/1958	147288	California	2.43	FAAP-10	-	aviation support facilities	none
85	200-25-071	5/17/1958	147289	California	2.43	FAAP-10	-	aviation support facilities	none
86	200-25-072	5/17/1958	147290	California	2.43	FAAP-10	-	aviation support facilities	none
87	200-25-073	5/17/1958	147291	California	2.43	FAAP-10	-	aviation support facilities	none
88	200-25-074	5/17/1958	147292	California	2.43	FAAP-10	-	aviation support facilities	none
89	200-25-075	5/17/1958	147293	California	2.43	FAAP-10	-	aviation support facilities	none
90	200-25-076	5/17/1958	147294	California	2.43	FAAP-10	-	aviation support facilities	none
91	200-25-077	5/17/1958	147295	California	2.43	FAAP-10	-	aviation support facilities	none
92	200-25-078	5/17/1958	147296	California	2.43	FAAP-10	-	aviation support facilities	none
93	200-25-079	5/17/1958	147297	California	2.43	FAAP-10	-	aviation support facilities	none
94	200-25-080	5/17/1958	147298	California	2.43	FAAP-10	-	aviation support facilities	none
95	200-25-081	5/17/1958	147299	California	2.43	FAAP-10	-	aviation support facilities	none
96	200-25-082	5/17/1958	147300	California	2.43	FAAP-10	-	aviation support facilities	none
97	200-25-083	5/17/1958	147301	California	2.43	FAAP-10	-	aviation support facilities	none
98	200-25-084	5/17/1958	147302	California	2.43	FAAP-10	-	aviation support facilities	none
99	200-25-085	5/17/1958	147303	California	2.43	FAAP-10	-	aviation support facilities	none
100	200-25-086	5/17/1958	147304	California	2.43	FAAP-10	-	aviation support facilities	none
101	200-25-087	5/17/1958	147305	California	2.43	FAAP-10	-	aviation support facilities	none
102	200-25-088	5/17/1958	147306	California	2.43	FAAP-10	-	aviation support facilities	none

Off-Airport Parcel Database

Map #	County Parcel #	Purchase Date	Document Record #	Grantor	Acreage	Federal Grant	Purpose	Current Use	Encumbrances
40	230-38-003	3/25/1988	9637888	Rodriguez	0.19	ARP-22	approach protection & noise compatibility	open space (Guadalupe River Park/flood channel)	Roof control easement (SCVWD)
41	230-38-065	6/23/1981	7092290	Espinosa	0.14	ARP-01	-	-	none
42	230-38-066	11/10/1980	1190401	Perly	0.39	ARP-01	-	-	-
43	230-38-076	5/8/1979	6375501	Corvera/Turco	0.37	ARP-01	-	-	-
44	230-38-079	11/10/1980	1190401	Perly	0.33	ARP-30	-	-	-
45	230-38-080	5/18/1979	6375501	Perly	0.26	ARP-01	-	-	-
46	230-38-083	12/10/1974	4892831	Perly	1.24	ADAP-06	-	-	-
47	230-38-092	5/18/1979	6375501	Corvera/Turco	0.43	ADAP-13	-	-	-
		11/10/1980	1190401	Perly	0.86	ADAP-13	-	-	-
		2/19/1981	6844490	Elliott	0.4	ADAP-13	-	-	-
		3/14/1986	9718379	Hochon	0.15	ARP-18	-	-	-
		5/27/1986	8734867	Moran	0.27	ARP-13	-	-	-
		3/17/1988	9629336	Zukas	0.09	ARP-22	-	-	-
48	230-38-104							open space (Guadalupe River Park/flood channel)	open space (Guadalupe River Park/flood channel)
		3/17/1988	9629337	Zukas	0.16	ARP-22	-	-	-
		4/5/1988	9644147	Beede	0.1	ARP-22	-	-	-
		6/3/1988	9712875	Mulley	0.18	ARP-22	-	-	-
		9/7/1988	9720481	Shelton	0.11	ARP-22	-	-	-
		10/11/1988	9869026	Shiva	0.19	ARP-22	-	-	-
		10/11/1988	9869027	Shiva	0.47	ARP-22	-	-	-
		10/11/1988	9869095	Shiva	0.46	ARP-22	-	-	-
		10/11/1988	9869096	Shiva	0.19	ARP-22	-	-	-
		3/30/1988	9842390	Carina	0.27	ARP-22	-	-	-
		4/11/1988	9653379	Maimo	0.21	ARP-22	-	-	-
		4/29/1988	9673854	Kreit	0.21	ARP-22	-	-	-
		6/7/1988	9715883	Coca	0.22	ARP-22	-	-	-
		8/11/1988	9728350	Willard	0.26	ARP-22	-	-	-
		11/23/1988	9922383	Lopez	0.24	ARP-22	-	-	-
		6/4/1990	1054481	McCaskey	0.2	ARP-26	-	-	-
		6/7/1990	1054814	McCaskey	0.19	ARP-26	-	-	-
		6/7/1990	1054815	McCaskey	0.35	ARP-26	-	-	-
		10/12/1988	9802169	Degroot	0.23	ADAP-01	-	-	-
		3/28/1991	1084658	Flores	0.12	ARP-26	-	-	-
51	230-38-111	7/24/1986	13381837	San Jose Airpark	1.92	ARP-30	-	-	none
52	230-38-113	11/10/1988	9600783	Randa	0.3	ARP-22	-	-	Roof control easement (SCVWD)
		12/20/1988	9633096	Nehara	0.29	ARP-22	-	-	-
		1/21/1992	11187317	Rend	0.3	ARP-26	-	-	-
		5/11/1988	9668158	Martinez	0.14	ARP-22	-	-	-
53	230-38-114	8/26/1988	9811513	Martinez	0.14	ARP-22	-	-	-
		8/21/1988	9811514	Martinez	0.14	ARP-22	-	-	-
		1/28/1970	3755044	Balg	0.11	ADAP-06	-	-	-
		3/24/1970	3781114	Richardson	0.17	ADAP-06	-	-	-
		3/12/1970	4020644	Alexander	0.17	ADAP-06	-	-	-
		1/24/1973	4637312	Ortump	0.17	ADAP-07	-	-	-
		8/21/1973	4637318	Ortump	0.17	ADAP-07	-	-	-
		12/21/1974	4913805	Platt	0.11	ADAP-07	-	-	-
		12/20/1974	4913806	Platt	0.11	ADAP-07	-	-	-
		1/14/1975	4928207	Gardner	0.11	ADAP-07	-	-	-
		1/23/1975	4933461	Deppa	0.23	ADAP-07	-	-	-
		1/29/1975	4939790	Starr	0.23	ADAP-07	-	-	-
		3/29/1975	4973376	Hemmington	0.23	ADAP-07	-	-	-
		4/11/1975	4974692	Starr	0.16	ADAP-07	-	-	-
		4/14/1975	4985426	Maryamita	0.17	ADAP-07	-	-	-
		4/11/1975	5027218	Giaco	0.23	ADAP-07	-	-	-
		5/13/1976	5286202	Silva	0.1	ADAP-07	-	-	-
		8/15/1976	5412079	Silva	0.1	ADAP-07	-	-	-
		1/28/1977	5535777	Shiva/Sapo	0.1	ADAP-07	-	-	-
		8/19/1978	6407220	Spawling	0.86	ADAP-06	-	-	-
		11/23/1982	1123304	Ejeda	0.06	FAAP-13	-	-	-
		5/22/1982	2198545	Munoz	0.11	FAAP-13	-	-	-
		7/20/1982	2220048	Juarez	0.09	FAAP-13	-	-	-
		8/21/1982	2236504	Telford	0.14	FAAP-13	-	-	-
		9/3/1982	2237063	Phillips	0.11	FAAP-13	-	-	-
		8/31/1982	2253376	Newcomb	0.14	FAAP-13	-	-	-
		11/18/1982	2502884	Hiraga	0.14	FAAP-13	-	-	-
		8/29/1981	2509068	Mercus	0.23	FAAP-13	-	-	-
		8/18/1982	2519888	Davis	0.23	FAAP-13	-	-	-
		8/18/1982	2511785	Llamas	0.17	FAAP-13	-	-	-
		8/28/1982	2518063	Bauer	0.17	FAAP-13	-	-	-
		11/5/1982	2589135	Grisio	0.96	FAAP-13	-	-	-
		5/20/1983	2406278	Volante	0.6	FAAP-13	-	-	-
		10/1/1970	3881866	Mannina	0.14	ADAP-06	-	-	-
		11/20/1970	3911564	Freneman	0.14	ADAP-06	-	-	-
		6/9/1971	4022825	Rives	0.15	ADAP-06	-	-	-
		11/10/1972	4117455	Mannera	0.14	ADAP-06	-	-	-
		8/15/1972	4347478	Volante	0.3	ADAP-06	-	-	-
		8/15/1973	4504370	Yamasaki	0.23	ADAP-07	-	-	-
		9/4/1973	4504371	Murphy	0.25	FAAP-13	-	-	-
		2/7/1975	4643045	Hiraguchi	0.14	ADAP-07	-	-	-
		8/13/1974	4630023	State of California	0.26	ADAP-07	-	-	-
		8/21/1974	4641337	Borowski	0.13	ADAP-06	-	-	-
		2/18/1975	4949025	Garner	0.1	ADAP-06	-	-	-
		5/27/1986	9679306	Seiler	0.13	ADAP-06	-	-	-
		8/10/1975	5059592	Pollock	0.13	ADAP-06	-	-	-
		8/11/1975	5100866	Vorbans	0.23	ADAP-06	-	-	-
		8/18/1975	5102369	Grijaka	0.16	ADAP-06	-	-	-
		1/26/1976	5108463	Fuentes	0.23	ADAP-06	-	-	-
		1/18/1976	5194463	Gonzalez	0.12	ADAP-06	-	-	-
		1/21/1976	5205145	Reyes	0.23	ADAP-06	-	-	-
		1/28/1989	3129818	Gibson	0.17	ADAP-06	-	-	-
		8/1/1975	5081535	Johnson	0.23	ADAP-07	-	-	-
		8/27/1975	5081536	Rose	0.11	ADAP-07	-	-	-
		8/18/1975	5079376	Nottingham	0.17	ADAP-07	-	-	-
		8/21/1975	5081491	Paig	0.11	ADAP-07	-	-	-
		8/20/1975	5062843	Belarano	0.11	ADAP-07	-	-	-
		9/8/1975	5030728	Paulson	0.17	ADAP-06	-	-	-
		8/10/1975	5066678	Hart	0.11	ADAP-07	-	-	-
		8/15/1975	5068078	Aharado	0.34	ADAP-07	-	-	-
		8/10/1975	5068815	Woodruff	0.11	ADAP-06	-	-	-
		8/19/1975	5103459	Green Valley	0.11	ADAP-07	-	-	-
		10/1/1975	5112401	Maitreanace	0.11	ADAP-07	-	-	-
		10/1/1975	5117874	Espinosa	0.17	ADAP-07	-	-	-
		11/8/1976	5196874	Espinosa	0.17	ADAP-07	-	-	-
		8/4/1978	5303312	Alfaga	0.23	ADAP-07	-	-	-
		1/21/1977	5517248	Espinosa	0.17	ADAP-07	-	-	-
		1/21/1978	5812880	Dakmich	0.17	ADAP-07	-	-	-
		8/29/1980	6729288	Cochran	0.34	ADAP-07	-	-	-
		7/31/1980	6781835	Moura	0.23	ADAP-06	-	-	-
		10/24/1980	6881111	Carlson	0.34	ADAP-07	-	-	-

Off-Airport Parcel Database

Map #	County Parcel #	Purchase Date	Document Record #	Grantor	Acreage	Federal Grant	Purpose	Current Use	Encumbrances
59	230-38-132	12/5/1973	4680718	San Jose Unified School District	0.48	ADAP-07	-	-	-
60	230-38-133				3.55	ADAP-05	-	-	none
		11/20/1975	5179323	McCommas/McMinn	0.11	ADAP-07	-	-	-
		12/12/1975	5174782	Elliott	0.14	ADAP-06	-	-	-
		12/12/1975	5174788	Dennee	0.14	ADAP-06	-	-	-
		12/12/1975	5179069	Rose	0.11	ADAP-06	-	-	-
		12/16/1975	5179070	Marka	0.11	ADAP-06	-	-	-
		12/16/1975	5179071	Casper	0.11	ADAP-06	-	-	-
		1/14/1976	5195677	Miyahara	0.14	ADAP-06	-	-	-
		1/20/1976	5200130	Casper	0.25	ADAP-07	-	-	-
		1/20/1976	5200249	Smethers	0.11	ADAP-06	-	-	-
		2/25/1976	5228248	Cruz	0.11	ADAP-07	-	-	-
		3/1/1976	5239556	Guinn	0.11	ADAP-06	-	-	-
		3/2/1976	5231901	VanPool/Tomlinson	0.11	ADAP-06	-	-	-
		7/10/1976	5235568	Lafiche	0.14	ADAP-06	-	-	-
		4/7/1977	5628210	Geppin	0.11	ADAP-06	-	-	-
		11/20/1975	5195648	Scrimm	0.25	ADAP-07	-	-	-
		2/4/1978	5212123	Koeling	0.17	ADAP-07	-	-	-
		7/13/1976	5334966	Fryman	0.23	ADAP-07	-	-	-
		8/10/1976	5377796	Canales					

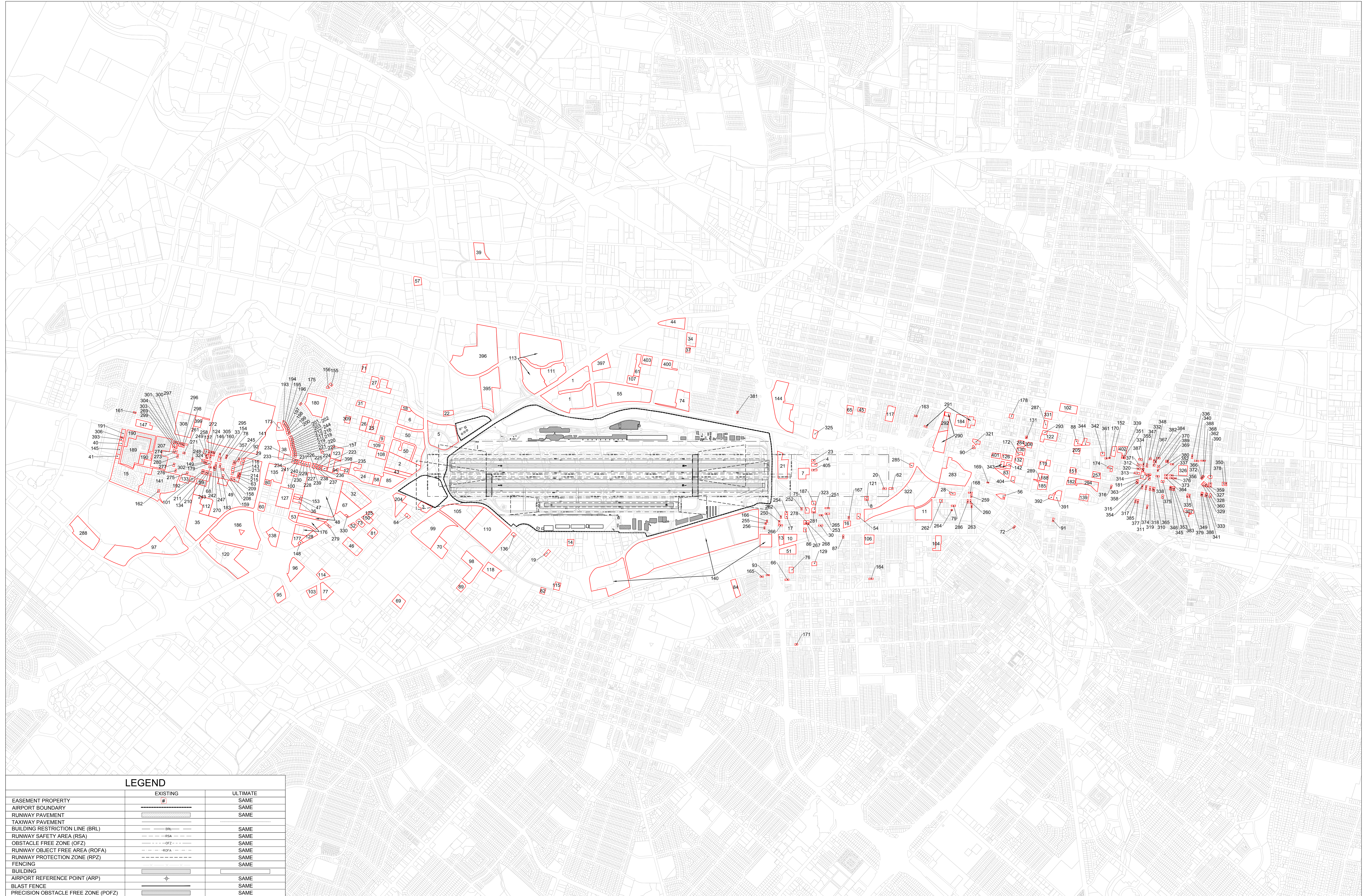
Off-Airport Parcel Database

Map #	County Parcel #	Purchase Date	Document Record #	Grantor	Acreage	Federal Grant	Purpose	Current Use	Encumbrances
77	250-08-004	10/19/78	6199910	Rapp	0.11	AP-01	-	open space (Gardens)	none
78	250-08-072	8/8/1992	11530215	Northland Properties	0.13	AP-15	-	-	-
		11/19/1975	5150273	Fernandez	0.15	ADAP-08	-	-	-
		11/28/1975	5181821	Valle	0.29	ADAP-08	-	-	-
		11/28/1975	5181822	Binguel	0.25	ADAP-08	-	-	-
		1/5/1976	5189437	Lopez	0.09	ADAP-08	-	-	-
		1/5/1976	5189438	Rios	0.09	ADAP-08	-	-	-
		1/14/1976	5199531	Turner	0.25	ADAP-08	-	-	-
		1/22/1976	5200194	Villamil	0.09	ADAP-08	-	-	-
		1/22/1976	5205184	Parsen	0.09	ADAP-08	-	-	-
		4/30/1978	5277885	España	0.14	ADAP-08	-	-	-
		8/7/1978	5303623	Cabreraugh	0.09	ADAP-08	-	-	-
79	250-08-098	8/7/1978	5303624	Gurasso	0.2	ADAP-08	-	-	-
		7/29/1978	5306111	Villana	0.25	ADAP-08	-	-	-
		8/30/1978	5424414	Riela	0.23	ADAP-08	-	-	-
		10/8/1978	5435955	Hernandez Sanchez	0.09	ADAP-08	-	-	-
		11/23/1978	5477323	SantaCruz	0.09	ADAP-08	-	-	-
		1/20/1977	5528745	Sweet	0.09	ADAP-08	-	-	-
		3/25/1977	5574199	Mahan	0.09	ADAP-08	-	-	-
		3/29/1977	5574200	Mahan	0.22	ADAP-08	-	-	-
		7/7/1977	5711883	Jaber	0.09	ADAP-08	-	-	-
		1/25/1977	5804765	Jaber	0.17	ADAP-09	-	-	-
		7/22/1981	7117825	Reimer	0.31	ADAP-08	-	-	-
		11/7/1977	5835920	Pandolfi	0.13	ADAP-10	-	-	-
		11/8/1977	5837387	Kaler	0.11	ADAP-10	-	-	-
		11/17/1977	5845874	Romanenko	0.11	ADAP-10	-	-	-
		12/15/1977	5872295	Nicoletti	0.14	ADAP-10	-	-	-
		1/22/1977	5868678	Blair	0.09	ADAP-10	-	-	-
		1/23/1978	5938301	Fernandez	0.14	ADAP-10	-	-	-
		1/30/1978	5944152	Barrera	0.13	ADAP-10	-	-	-
		4/25/1978	5952887	Pierce	0.11	ADAP-10	-	-	-
		11/21/1978	6155881	Pereira	0.09	ADAP-10	-	-	-
		5/28/1981	7095921	Vitanova	0.11	AP-01	-	-	-
		2/14/1983	7987320	Simpson	0.19	AP-02	-	-	-
		8/29/1986	8291895	Northland Properties	0.13	AP-15	-	-	-
		8/30/1977	5789343	Marilyn	0.11	ADAP-10	-	-	-
		8/24/1977	5774405	Cruciano	0.14	ADAP-10	-	-	-
		8/8/1977	5777540	Herrera	0.11	ADAP-10	-	-	-
		8/23/1977	5793443	Rodriguez	0.09	ADAP-10	-	-	-
		8/30/1977	5793112	Cammerino	0.13	ADAP-10	-	-	-
		1/3/1978	5800822	Mehum	0.11	ADAP-10	-	-	-
		1/25/1977	5824022	Asano	0.14	ADAP-10	-	-	-
		1/22/1977	5826349	Parr	0.11	ADAP-10	-	-	-
		11/13/1977	5839971	Fernandez	0.13	ADAP-10	-	-	-
		11/13/1977	5844073	Paz	0.14	ADAP-10	-	-	-
		11/13/1977	5866485	Cox	0.14	ADAP-10	-	-	-
		2/14/1978	5929263	Marinez	0.15	ADAP-10	-	-	-
		4/28/1978	6011019	Rafael	0.28	ADAP-10	-	-	-
		4/30/1979	6057435	Jones Wallace	0.55	AP-01	-	-	-
		7/14/1980	6779925	Grattan	0.13	ADAP-13	-	-	-
		8/19/1986	8292967	Fajon	0.11	AP-15	-	-	-
		7/9/1986	8851279	Nicholson	0.14	AP-13	-	-	-
		7/9/1986	8851282	Nicholson	0.14	AP-13	-	-	-
		8/27/1986	8929158	Mutz	0.34	AP-15	-	-	-
		3/14/1988	9292123	Gonzalez et al	0.3	AP-13	-	-	-
82	250-11-021	8/9/1982	7434468	Varkicigan	0.17	AP-07	-	-	-
83	250-12-032	1/11/1980	7870208 7870310	Perez et al	0.19	AP-05	-	-	-
		4/12/1979	6339789	Galay	0.17	ADAP-12	-	-	-
		6/6/1979	6350507	Hernandez	0.17	ADAP-12	-	-	-
		8/1/1979	6400278	ADAP-12	0.17	ADAP-12	-	-	-
		7/3/1979	6419964	Brandt	0.17	ADAP-12	-	-	-
		7/3/1979	6448655	Romano	0.17	ADAP-12	-	-	-
		8/2/1979	6452527	Narvaez	0.09	ADAP-12	-	-	-
		7/8/1981	7102354	Rodriguez	0.09	AP-01	-	-	-
		3/24/1982	7300691	Garcia	0.17	AP-01	-	-	-
		1/28/1982	7302392	Sanz	0.17	AP-02	-	-	-
		8/1/1979	6451107	Fine	0.45	ADAP-12	-	-	-
		8/10/1979	6465308	Caprio Morales	0.16	ADAP-12	-	-	-
		1/19/1980	6518809	Baizales	0.15	ADAP-13	-	-	-
		2/19/1980	6651474	Rodriguez	0.17	AP-01	-	-	-
		3/3/1980	6662933	Ordinez	0.11	AP-01	-	-	-
		3/25/1980	6683871	Kiuchi	0.17	ADAP-13	-	-	-
		3/25/1980	6683872	Johnson	0.11	AP-02	-	-	-
		5/20/1980	6734562	Patino	0.14	AP-02	-	-	-
		6/20/1980	6743739	Patino	0.13	ADAP-13	-	-	-
		8/13/1980	6804639	Ordinez	0.1	AP-02	-	-	-
		9/23/1980	6845630	Mizota	0.11	AP-02	-	-	-
		4/8/1981	7001378	Krause	0.11	AP-02	-	-	-
		4/8/1981	7008812	Rodriguez	0.15	AP-02	-	-	-
		6/28/1981	7091968	Galos	0.11	AP-02	-	-	-
		8/9/1982	7434544	Rodriguez	0.18	AP-01	-	-	-
		8/29/1983	7781198	Daston	0.16	AP-07	-	-	-
		1/31/1984	7863489	Marinez	0.1	AP-07	-	-	-
		8/26/1986	8918514	Marinez	0.14	AP-11	-	-	-
		1/20/1979	6544450	Martin	0.23	AP-01	-	-	-
		1/20/1979	6544451	Paez	0.23	AP-01	-	-	-
		11/31/1979	6559371	Balero	0.16	AP-01	-	-	-
		11/31/1979	6559375	Graglia	0.23	ADAP-13	-	-	-
		11/16/1979	6564286	Bethel Latin American Corp. of Christian	0.23	ADAP-12	-	-	-
		11/27/1979	6572549	Chavez Aguirre	0.16	AP-01	-	-	-
		11/20/1979	6576276	Rodriguez	0.16	ADAP-12	-	-	-
		11/20/1979	6578103	Paez	0.23	ADAP-12	-	-	-
		1/24/1979	6582387	MacDonald	0.1	ADAP-13	-	-	-
		1/23/1979	6590877	Collyer Carrasco	0.32	AP-01	-	-	-
		2/7/1980	6644564	Castro Usabio	0.16	AP-01	-	-	-
		4/22/1980	6710397	Chavez	0.17	ADAP-12	-	-	-
		11/17/1980	6897464	Shizek	0.16	ADAP-13	-	-	-
		2/17/1981	6962112	Villalobos	0.23	AP-01	-	-	-
		2/19/1981	6984308	Woodard	0.2	AP-01	-	-	-
		10/15/1981	7189164	Reamonte	0.16	AP-06	-	-	-
		12/15/1982	7443340	Bronka	0.14	AP-02	-	-	-
		4/5/1983	7642724	Farnell	0.16	AP-07	-	-	-
		1/26/1983	7862341	MacDonald	0.16	AP-07	-	-	-
		5/10/1984	8058878	Krzyszew	0.33	AP-11	-	-	-

Off-Airport Parcel Database

Map #	County Parcel #	Purchase Date	Document Record #	Grantor	Acreage	Federal Grant	Purpose	Current Use	Encumbrances
		2/14/1979	626825	Rebermann Torres	0.08	ADAP-12	-	-	-
		2/22/1979	6291123	Santana	0.08	ADAP-12	-	-	-
		3/20/1979	6317542	Rebagliati	0.16	ADAP-12	-	-	-
		3/23/1979	6321063	Guerra	0.1	ADAP-12	-	-	-
		4/3/1979	6330079	Dobson/Amidi	0.23	ADAP-12	-	-	-
		4/4/1979	6331466	Waring	0.17	ADAP-12	-	-	-
		4/6/1979	6334362	Cabrera	0.16	ADAP-12	-	-	-
		4/20/1979	6349734	ADAP-12	0.21	ADAP-12	-	-	-
		4/27/1979	6355504	Manuca	0.24	ADAP-12	-	-	-
		5/2/1979	6360005	Zamora	0.11	ADAP-12	-	-	-
		5/2/1979	6360007	Giovannoni	0.24	ADAP-12	-	-	-
		5/4/1979	6362819	Dezandi	0.16	ADAP-12	-	-	-
		5/8/1979	6368166	Espada	0.24	ADAP-12	-	-	-
		5/30/1979	6387791	Huiri	0.24	ADAP-12	-	-	-
		6/5/1979	6393511	Miquelobon	0.17	ADAP-12	-	-	-
		6/29/1979	6413668	Vaquero	0.24	ADAP-12	-	-	-
		7/23/1979	6414500	Hernandez	0.16	ADAP-12	-	-	-
		11/5/1979	6549005	Ramirez	0.22	ADAP-12	-	-	-
		4/28/1980	6715855	Lindsay	0.16	ADAP-13	-	-	-
		3/29/1981	6731170	Tennette	0.22	ADAP-13	-	-	-
		1/23/1981	7240440	Lindsay	0.33	AP-01	-	-	-
		5/26/1982	7399119	Agular	0.1	AP-01	-	-	-
88	250-13-041	10/10/1968	8978303	Guerrero	0.16	AP-11	-	-	-
		2/6/1975	6278976	Cabrera	0.16	AP-02	-	-	-
		4/25/1980	6714729	La Torre	0.16	AP-02	-	-	-
		4/25/1980	6714730	La Torre et al	0.16	AP-02	-	-	

Off-Airport Aviation and Noise Easements

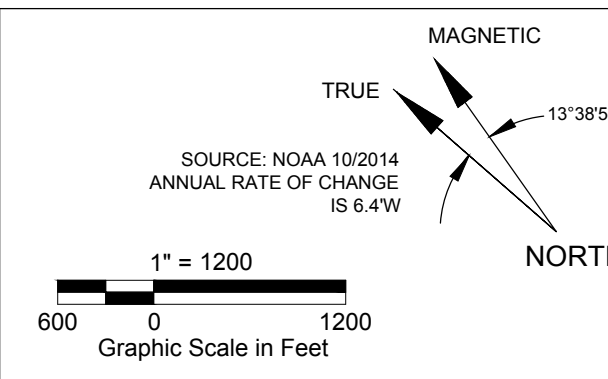


LEGEND

	EXISTING	ULTIMATE
EASEMENT PROPERTY	#	SAME
AIRPORT BOUNDARY	---	SAME
RUNWAY PAVEMENT	=====	SAME
TAXIWAY PAVEMENT	-----	SAME
BUILDING RESTRICTION LINE (BRL)	---	SAME
RUNWAY SAFETY AREA (RSA)	---	SAME
OBSTACLE FREE ZONE (OFZ)	---	SAME
RUNWAY OBJECT FREE AREA (ROFA)	---	SAME
RUNWAY PROTECTION ZONE (RPZ)	---	SAME
FENCING	---	SAME
BUILDING	▭	SAME
AIRPORT REFERENCE POINT (ARP)	+	SAME
BLAST FENCE	---	SAME
PRECISION OBSTACLE FREE ZONE (POFZ)	---	SAME



SAN JOSE INTERNATIONAL AIRPORT



NO.	BY	APP	DATE	REVISIONS

EXHIBIT 'A'
AIRPORT PROPERTY
INVENTORY MAPS

Off-Airport Avigation and Noise Easement Database

Map #	File ID	Recording Date / Doc #	Grantor	Address	City	Assessor Parcel #	Acres
403	AE 14-01	11/02/2014	42771485	303 W. Hedding	San Jose	259-25-106	0.2
404	AE 14-01	8/11/2014	62687540	SE of W. Santa Clara#7	San Jose	259-25-111	0.5
405	AE 14-03	8/27/2014	82692569	Schmidt/Baillienry et al	San Jose	259-25-222/234	2.4
402	AE 14-02	6/11/2014	82281846	60 Pavia-San Juan	San Jose	259-25-042/043	2.2
401	AE 13-02	5/23/2013	82233348	Livingsport Bldg	San Jose	259-35-000/00047	1.3
400	AE 13-01	5/1/2013	82219643	San Jose HPO Hotel Development	San Jose	230-29-109	2.8
399	AE 11-04	8/15/2011	80127781	KH Home South Bay	Santa Clara	697-26-050	2.3
398	AE 11-03	4/19/2011	82115036	Macdonalds	Santa Clara	331-02-028	2.2
397	AE 11-01	3/23/2011	821119373	Airport Parkway Two	San Jose	230-29-065	6.1
396	AE 08-02	3/9/2009	80012424	The Campus & North First	San Jose	101-02-011	4.3
395	AE 08-01	3/9/2009	81978832	Legacy Partners II S/O Ormond Pkwy	San Jose	101-02-019	18.4
394	NAP-20	10/30/2007	81903341	Center for Employment Training	San Jose	259-34-073/074	0.2
393	AE 07-04	10/17/2007	819621854	Silicon Valley Habitat for Humanity	Santa Clara	104-59-036--042	0.3
392	AE 07-03	10/17/2007	819621853	Legacy Partners R/W Park II	San Jose	259-43-074	0.7
391	AE 07-02	10/17/2007	819621852	Legacy Partners Riverside I	San Jose	259-43-072/073	1.8
390	LNE-164	10/12/2007	819616237	Salsoba	San Jose	434-07-012	0.1
389	LNE-163	10/12/2007	819616236	Blackwell	San Jose	254-35-102	0.1
388	LNE-162	10/12/2007	819616235	Hill	San Jose	434-07-054	0.1
387	LNE-161	10/12/2007	819616234	VanCheng	San Jose	254-35-106	0.1
386	LNE-160	9/25/2007	819595987	Durr	San Jose	440-10-067	0.1
385	LNE-159	9/12/2007	819583905	Bart	San Jose	254-35-098	0.1
384	LNE-158	9/12/2007	819583903	Tong	San Jose	254-35-130	0.2
383	LNE-157	9/12/2007	819583901	Campos	San Jose	254-36-017	0.1
382	LNE-156	8/24/2007	819569302	Gopi	San Jose	254-36-113	0.2
381	LNE-155	8/24/2007	819569301	Tanovee	San Jose	230-25-311	0.1
380	LNE-154	8/24/2007	819569299	791 State	San Jose	254-36-112	0.1
379	LNE-153	8/24/2007	819569248	DiSavio	San Jose	254-36-095	0.1
378	LNE-152	8/24/2007	819569247	DiSavio	San Jose	434-04-021	0.2
377	LNE-151	7/19/2007	819519882	Farrar	San Jose	254-35-060	0.1
376	LNE-150	7/19/2007	819519881	719 State	San Jose	101-02-034	0.2
375	LNE-149	7/19/2007	819519459	Burnham	San Jose	254-36-149	0.2
374	LNE-148	7/19/2007	819519458	Roach	San Jose	254-36-079	0.1
373	LNE-147	7/19/2007	819519457	Stegoso	San Jose	254-36-066	0.1
372	LNE-146	7/19/2007	819519456	Perezco	San Jose	434-07-029	0.1
371	LNE-145	7/19/2007	819519455	Bernham	San Jose	101-02-036	0.2
370	LNE-144	5/31/2007	819451534	Barria	San Jose	254-36-111	0.2
369	LNE-143	5/31/2007	819451533	Favre	San Jose	254-36-108	0.1
368	LNE-142	5/31/2007	819451532	Rohan	San Jose	434-07-027	0.1
367	LNE-141	5/31/2007	819451531	Parce	San Jose	254-36-098	0.1
366	LNE-140	5/31/2007	819451530	Rohan	San Jose	434-07-028	0.1
365	LNE-139	4/9/2007	819375587	Schraer	San Jose	254-36-032	0.2
364	LNE-138	4/9/2007	819375586	Conzales	San Jose	254-36-032	0.1
363	LNE-137	4/9/2007	819375585	Martinez	San Jose	254-36-007	0.1
362	LNE-136	4/9/2007	819375584	Shapiro	San Jose	254-36-064	0.1
361	LNE-135	4/9/2007	819375583	Lengweng	San Jose	254-36-044	0.1
360	LNE-134	4/9/2007	819375582	Huang	San Jose	434-07-068	0.3
359	LNE-133	4/9/2007	819375581	Carozza	San Jose	434-07-014	0.1
358	LNE-132	4/9/2007	819375580	Martinez	San Jose	254-36-028	0.1
357	AE 07-01	4/5/2007	819371198	Kawaga	Santa Clara	104-12-079	0.2
356	LNE-131	3/1/2007	819334844	Parce	San Jose	254-36-056	0.1
355	LNE-130	3/1/2007	819334843	George	San Jose	254-35-058	0.1
354	LNE-129	3/1/2007	819334842	Shular	San Jose	254-36-070	0.2
353	LNE-128	3/1/2007	819334841	Shular	San Jose	254-36-018	0.2
352	LNE-127	10/22/2006	819238582	Padilla	San Jose	254-36-064	0.2
351	LNE-126	10/22/2006	819238581	Rice	San Jose	254-36-066	0.1
350	LNE-125	10/22/2006	819238579	Burke	San Jose	434-06-038	0.1
349	LNE-124	10/22/2006	819238578	Dutra	San Jose	434-06-061	0.1
348	LNE-123	10/22/2006	819238577	Tong	San Jose	254-36-118	0.1
347	LNE-122	10/22/2006	819238576	Tong	San Jose	254-35-051	0.3
346	LNE-121	10/22/2006	819238575	Umana	San Jose	254-36-011	0.1
345	LNE-120	10/22/2006	819238574	Umana	San Jose	254-36-014	0.1
344	AE 06-03	6/9/2006	818982651	Redevelopment Agency of the City of San Jose	San Jose	254-71-001--429	1
343	AE 06-02	5/31/2006	81897444	Amador Tower Venture	San Jose	259-35-055	1.4
342	AE 06-01	5/17/2006	818939041	Sabbach	San Jose	259-89-001--029	0.4
341	LNE-119	4/21/2006	818898106	Lee	San Jose	254-36-070	0.1
340	LNE-118	4/21/2006	818898105	Kalish	San Jose	254-36-068	0.2
339	LNE-117	4/21/2006	818898104	Wong	San Jose	254-36-056	0.1
338	LNE-116	4/21/2006	818898103	Melrose	San Jose	254-36-010	0.1
337	LNE-115	4/21/2006	818898102	Oliva	San Jose	254-36-030	0.1
336	LNE-114	3/8/2006	81887105	Barragato/Bertero	San Jose	254-35-062	0.2
335	LNE-113	3/8/2006	818856554	DiSavio	San Jose	254-36-097	0.2
334	LNE-112	3/8/2006	818856553	Rioser	San Jose	254-36-068	0.1
333	LNE-111	3/8/2006	818856552	DiSavio	San Jose	434-06-071	0.1
332	LNE-110	3/8/2006	818856551	Bentley	San Jose	254-35-048	0.1
331	AE 05-06	2/15/2006	818769265	Block S Development Partners	San Jose	467-54-001--207	1.3
330	AE 05-05	1/5/2006	818759484	Heggl	Santa Clara	104-12-025	0.2
329	LNE-109	1/15/2006	818692613	Reppig	San Jose	434-07-022	0.2
328	LNE-108	1/15/2006	818692612	Paraiso	San Jose	434-07-033	0.3
327	LNE-107	1/15/2006	818692611	Paraiso	San Jose	434-07-024	0.3
326	NAP-19	8/27/2005	818597398	San Jose Unified School Dist.	San Jose	434-07-012	2.5
325	AE 05-04	8/15/2005	818512146	County of Santa Clara	San Jose	259-34-020 Part	0.2
324	AE 05-03	8/15/2005	818364869	Nicas	Santa Clara	104-12-110	0.2
323	AE 05-02	4/19/2005	818327869	PMP Limited Partnership	San Jose	259-35-159	0.4
322	AE 05-02	4/4/2005	818302238	Covans San Jose MarketCenter	San Jose	259-54-033/042/045-7	39
321	AE 04-04	3/1/2005	818013104	City Heights	San Jose	101--087	0.1
320	LNE-106	9/14/2004	818001279	Cortez/Kaspar	San Jose	254-36-014	0.1
319	LNE-105	9/14/2004	818001278	Martinez	San Jose	254-36-050	0.2
318	LNE-104	9/14/2004	818001277	YUN Inc.	San Jose	254-34-060	0.2
317	LNE-103	9/14/2004	818001276	YUN Inc.	San Jose	254-34-058	0.2

Off-Airport Avigation and Noise Easement Database

Map #	File ID	Recording Date / Doc #	Grantor	Address	City	Assessor Parcel #	Acres	
316	LNE-102	9/14/2004	818001275	Comet	San Jose	254-31-844	0.2	
315	LNE-101	9/14/2004	818001274	Item	San Jose	254-33-068	0.2	
314	LNE-100	9/14/2004	818001273	Item	San Jose	254-33-207	0.2	
313	LNE-99	9/14/2004	818001272	Item	San Jose	254-33-056	0.3	
312	LNE-98	9/14/2004	818001271	Bus	San Jose	254-33-058	0.1	
311	LNE-97	9/14/2004	818001270	Auto	San Jose	254-34-065	0.2	
310	LNE-96	9/14/2004	818001269	Comet	San Jose	254-34-049	0.2	
309	AE 04-02	6/9/2004	817839653	315-525 Auto	Santa Clara	104-60-020--033	1	
308	AE 04-01	6/9/2004	817838147	First American Title Insurance Co.	Santa Clara	097-08-079--114 097-20-119--293	11.8	
307	NAP-18	5/29/1994	817809191	Roman Catholic Welfare Corp. of San Jose	San Jose	254-39-019	1.1	
306	AE 03-01	10/29/2003	817428985	Silicon Valley Habitat for Humanity	Santa Clara	104-60-087/088/089	0.2	
305	LNE-95	6/19/2003	817123131	Clark	Santa Clara	104-10-029	0.2	
304	LNE-94	6/19/2003	817123130	Luna/Almos	Santa Clara	104-10-064	0.1	
303	LNE-93	6/19/2003	817123129	Luna/Almos	Santa Clara	104-10-072	0.2	
302	LNE-92	6/19/2003	817123128	Santuz	Santa Clara	104-12-045	0.1	
301	LNE-91	5/29/2003	817076176	Mosley	Santa Clara	104-10-045	0.3	
300	LNE-90	5/29/2003	817076175	Mosley	Santa Clara	104-10-046	0.3	
299	LNE-89	5/29/2003	817076174	Mosley	Santa Clara	104-10-011	0.1	
298	LNE-88	5/29/2003	817076007	Hutton	Santa Clara	104-10-076	0.3	
297	LNE-87	5/29/2003	817076006	Millet	Santa Clara	104-10-062	0.2	
296	LNE-86	5/29/2003	817076005	Millet	Santa Clara	104-10-063	0.2	
295	AE 01-05	7/31/2002	816395844	San Microsystems	Santa Clara	097-08-068/109/131/14	83.1	
294	AE 01-04	11/6/2001	815948255	BP Amador Assoc./Redevelopment Agency of the City of San Jose	San Jose	254-29-019/29--428 028/148/150/153/160/167/169/171-177	3.5	
293	AE 01-03	9/20/2001	815877035	Redevelopment Agency of the City of San Jose	San Jose	50 W. San Fernando	259-41-086	0.5
292	AE 01-02	9/19/2001	815874306	Park Home Corp.	San Jose	20-88 Ryland Park (Dr. & W.)	259-50-003--008	3.4
291	AE 01-01	8/20/2001	815844481	Park Townsend	San Jose	56 Dvina 140 W. Julian	259-50-002--031	1.8
290	AE 01-07	8/28/2001	815844440	Legacy Partners First Street Investors II	San Jose	406 N. First 100 Ryland	259-51-001/004	7.1
289	AE 01-06	7/24/2001	815797552	Redevelopment Agency of the City of San Jose	San Jose	151 S. Amador	259-44-028	0.8
288	AE 01-05	7/18/2001	815797551	Redevelopment Agency of the City of San Jose	San Jose	455-466 Grand America	259-43-071/018	1.4
287	AE 01-04	5/22/2001						

Off-Airport Avigation and Noise Easement Database

Map #	File ID	Recording Date / Doc #	Grantor	Address	City	Assessor Parcel #	Acres	
147	NAF-11	7/10/1991	#1069134	Hogg	774 Chestnut	San Jose	259-24-014	0.1
146	NAP-12	7/10/1991	#1069145	Bolano	1067 Chestnut	San Jose	252-23-028	0.1
163	NAP-11	7/10/1991	#1069144	O'Keefe	1024 Neffall	San Jose	232-21-040	0.1
164	NAP-10	7/10/1991	#1069143	Jones	1033 Villa	San Jose	211-24-053	0.2
165	NAP-09	7/10/1991	#1069142	Kuker	49 Hawthorne	San Jose	259-19-007	0.1
162	NAP-08	7/10/1991	#1069141	Choi	4432 Lawrence	San Jose	254-04-045	0.2
161	NAP-07	7/10/1991	#1069140	Fantano	2085 Hognan	Santa Clara	697-15-017	0.1
159	NAP-06	7/10/1991	#1069139	Milne	4162 Lawrence	Santa Clara	104-12-124	0.2
158	NAP-05	7/10/1991	#1069138	Lucasate	4104 Creechey	Santa Clara	104-12-045	0.2
157	NAP-04	7/10/1991	#1069137	Yucaso	4034 Creechey	Santa Clara	104-12-051	0.2
156	NAP-03	7/10/1991	#1069136	Collins	3566 Rowena	Santa Clara	101-07-075	0.3
155	NAP-02	7/10/1991	#1069135	Vernon/Henry	3018 Eastwood	Santa Clara	101-14-047	0.2
154	NAP-01	7/10/1991	#1069134	Lovo	3024 Eastwood	Santa Clara	101-14-045	0.1
153	AE 91-01	5/9/1991	#1069172	Home	4100 Lawrence	Santa Clara	104-12-199	0.1
152	AE 90-06	5/9/1991	#1069170	Baraca	1480 Norman	Santa Clara	104-14-071	0.7
151	AE 90-04	5/9/1991	#1069169	Redevelopment Agency of the City of San Jose	521-835 S. Market	San Jose	264-30-119	1.2
150	AE 90-05	3/12/1991	#1069168	Redevelopment Agency of the City of San Jose	300 Almaden	San Jose	264-29-109	1.1
149	AE 90-02	1/28/1991	#1069165	Caputo	1020-1030 Diane	Santa Clara	224-08-145 part	1.6
148	AE 90-03	1/18/1991	#1069163	Zan	4262 Diane	Santa Clara	104-12-078	0.2
147	AE 90-01	8/27/1990	#1069162	Tec Con Construction	1395-2055 Laurelwood	Santa Clara	104-13-114	0.2
146	AE 89-04	4/5/1990	#10478211	Shanew	465-1416 Lafayette 2102-1146 Payne 4054-1440 Sneed	Santa Clara	097-12-131-117 697-11-130	3.8
145	AE 89-08	4/5/1990	#10478210	Gonaves	4210 Bassett	Santa Clara	104-12-008	0.2
144	AE 89-05	10/25/1989	#10299986	Meyers	2309 Geneva	Santa Clara	104-08-051-068	1.1
143	AE 89-02	8/17/1989	#10221476	Santa Clara County Transit Dist.	SW of N. Fila880	San Jose	230-26-074	22.1
142	AE 89-01	8/17/1989	#10221475	Clare	4033-4036 Creechey	Santa Clara	104-12-034	0.3
141	AE 89-03	8/17/1989	#10221474	Redevelopment Agency of the City of San Jose	231-2319 Santa Clara	San Jose	230-23-021	0.2
140	AE 89-02	5/9/1989	#10210243	Morera	4000 Bassett	Santa Clara	104-12-210/211 parts	0.3
139	AE 89-01	1/27/1989	#9907005	FMC	335 Stockton 1105-1001 Coleman 1095 Stockton	San Jose San Jose	230-06-033/42/49/49/49 230-40-059/059-063 230-27-001/002	102.5 (90.8 S) (55.7 SC)
138	AE 88-03	11/31/1989	#9977302	Redevelopment Agency of the City of San Jose	along West south of W. San Carlos	San Jose	264-27-006/008 parts	1.2
137	AE 88-01	12/21/1988	#9932660	Herman	2151 Laurelwood	Santa Clara	104-14-008	4.5
136	AE 87-02	3/21/1988	#9933386	Freidoad	4250 Bassett	Santa Clara	104-12-005	0.1
135	AE 87-01	11/23/1987	#9915044	Casell/Bagni Assoc.	2462-2466 Ave A Cruz 30-440 Martin	Santa Clara	230-03-082	0.2
134	AE 86-15	10/19/1987	#9461711	Reed & Graham	3000 Bassett	Santa Clara	104-14-159/150	8.5
133	AE 87-01	5/29/1987	#9461405	Shawna	4234 Creechey	Santa Clara	104-12-033	0.2
132	AE 86-05	4/9/1987	#9224771	Denick	2202-2240 St. Clara	Santa Clara	104-38-041-069	2
131	AE 86-04	2/25/1987	#9170488	Almaden Tower Partners	1512 Almaden 202-220 W. Santa Clara	San Jose	259-29-122	1.6
130	AE 85-05	2/25/1987	#9170487	Kof America Bank Assoc.	34 N. Market 81 89 Post	San Jose	259-40-053/072	0.2
129	AE 84-14	12/31/1986	#8920991	NeonKoter Assoc.	160 W. Hedding	San Jose	259-40-037/088	1.3
128	AE 84-07	9/11/1986	#8940266	Bellarmine College Prep.	90 W. Hedding	San Jose	261-12-001/014	0.4
127	AE 86-01	7/23/1986	#8927561	Citadel	1655-1775 Laurelwood	Santa Clara	104-15-060/067	1.9
126	AE 85-07	7/23/1986	#8927564	AI Products Manufacturing Corp.	1515 Norman	Santa Clara	104-14-168	7.9
125	AE 85-08	5/29/1986	#8929937	Downtown Commercial Group	211-225 W. Santa Clara	San Jose	259-35-020/021	1.6
124	AE 85-09	5/29/1986	#8929938	Public Storage Inc.	1018 Duane	Santa Clara	224-08-141	0.7
123	AE 85-11	5/29/1986	#8929934	Lutz	4230 Bassett	Santa Clara	104-12-027	0.2
122	AE 85-10	5/29/1986	#8929933	Sun-Tec II	807 Alamo	Santa Clara	101-09-023	3.8
121	AE 85-10	2/27/1986	#8920839	Redevelopment Agency of the City of San Jose	170 S. First 62 W. San Fernando	San Jose	259-41-077/078/079/080	3.5
120	AE 84-01	3/21/1986	#8907562	Hosman	100 W. Taylor	San Jose	259-11-026	0.3
119	AE 84-02	2/21/1986	#8907561	Makatsky, Sun & Co.	3000 & 3005 Juliette	Santa Clara	104-13-027/099/099	26.7
118	AE 83-07	1/6/1986	#8846495	New Almaden Assoc.	2000 Mission College	San Jose	259-41-068	2
117	AE 84-09	6/27/1985	#8452276	Martin Assoc.	150 S. Almaden 130 Park Center	Santa Clara	234-25-017	4.8
116	AE 85-03	6/27/1985	#8452275	Jefferson Square Partnership	65-650 Martin	San Jose	259-49-001-086	3.4
115	AE 85-04	6/27/1985	#8452274	Moran	4032-4044 Davis	Santa Clara	104-12-206/207	0.3
114	AE 85-02	5/9/1985	#8932903	Phoenicia	556 Reed	Santa Clara	230-24-020	1.2
113	AE 83-03	4/4/1985	#8371516	South Bay Construction & Development Co. VII	3033 Scott	Santa Clara	224-08-158	2.2
112	AE 84-10A	4/4/1985	#8371515	Neto	210-1221 N. First 59 W. of Charcroft/Net	San Jose	104-10-004/005	47.4
111	AE 84-11	4/4/1985	#8371514	CCAF Santa Clara Investment Co.	4295-4295 Burton	Santa Clara	104-13-004/005	9.8
110	AE 84-10B	4/4/1985	#8371513	Ochard Investment Co. #901	2205-2207 Agnew	San Jose	101-04-006/007	10.6
109	AE 84-10	4/4/1985	#8371512	Continental Corp. of America	2000-2706 De La Cruz	Santa Clara	230-03-008/100	28.6
108	AE 84-03	1/16/1985	#8302984	Horton	500 William	Santa Clara	101-11-027/028/029	3.2
107	AE 84-12	1/3/1985	#8294242	E.A. Hathaway and Co.	561 Laurelwood	Santa Clara	101-11-231	2.4
106	AE 84-08	12/10/1984	#8174201	Soparto Development Co.	1740 Technology	San Jose	230-26-020	3.2
105	AE 84-05	10/10/1984	#8141021	Salvation Army	675 Stockton 760-762 W. Taylor 749-751 Villa	San Jose	261-08-003/088	2.4
104	AE 84-01	8/31/1984	#8140383	Airport Technology Park Assoc.	2776-2831 De La Cruz	Santa Clara	230-23-008/07/08	18.8
103	AE 84-04	4/19/1984	#8040268	Davis	370-380 N. Morrison	San Jose	261-01-041/042/043/050	2.6
102	AE 82-08	4/2/1984	#8022711	Berg	308 Scott	Santa Clara	224-04-020	2.6

Off-Airport Avigation and Noise Easement Database

Map #	File ID	Recording Date / Doc #	Grantor	Address	City	Assessor Parcel #	Acres	
102	AE 83-09	12/30/1983	#7906688	Redevelopment Agency of the City of San Jose	201 S. Fourth 144 (part) & 200 S. Third 110-120 E. San Carlos	San Jose	467-60-015-018/019/020 084-088/090/098 659-07-03/04-066 109-21-110-132	3.4
99	AE 82-02	11/3/1983	#7874096	Manchardas	4266 Creechey	Santa Clara	104-12-178	0.2
98	AE 82-13	7/21/1983	#7756898	Caruso	1180 Norman	Santa Clara	104-12-124	0.4
97	AE 82-10	3/14/1983	#7620218	Sobrato/Granum	700-800 Central 2505 Lafayette 801-851 Martin	Santa Clara	224-04-058/080 224-04-090	22.8 9.6
96	AE 81-14	2/8/1983	#7594824	Smith/Sullivan	3205-3270 Jay	Santa Clara	224-09-172	0.6
95	AE 81-13	2/8/1983	#7594823	Post/Amigo/Neocos	3201-3203 Ocot	Santa Clara	224-47-211	3.5
94	AE 79-08	6/10/1982	#7386706	Mission Trail Oil Co.	3471 Lafayette	Santa Clara	101-09-024 part	0.5
93	AE 79-16	6/10/1982	#7386705	Hudson	1000 Hudson	San Jose	230-21-044	0.1
92	AE 81-09	4/27/1982	#7348962	Hill	1600 Chestnut	Santa Clara	104-12-168	0.3
91	AE 81-07	4/27/1982	#7348961	Peromo	290 Sonoma	San Jose	259-40-084	0.1
90	AE 81-01	4/6/1982	#7331211	Smith/Venosa	SW of Devere/S. James	San Jose	259-32-079 part	0.1
89	AE 81-07	3/8/1982	#7290300	Humans Society of Santa Clara Valley	2033 Lafayette	Santa Clara	234-40-004	1.4
88	AE 81-17	3/3/1982	#7290293	Lin	302-320 S. Market	San Jose	264-29-107	0.7
87	AE 81-16	3/3/1982	#7290292	Duply	778 Stockton	San Jose	261-10-073	0.1
86	AE 81-13	1/16/1981	#7121020	Franz Assoc.	814 Stockton	San Jose	234-48-071	0.3
85	AE 79-20	10/19/1981	#7120544	Cow Landwood Assoc.	720 Broadway	Santa Clara	101-13-003	7.2
84	AE 81-08	10/8/1981	#7184748	Jury/Mar/Patio	1006-1178 Alamo 1177-1183 Campbell	San Jose	230-04-004-004 230-04-007-041	2.7
83	AE 81-06	10/1/1981	#7179477	Morgan Investments	333 W. Santa Clara	San Jose	259-38-074	1.8
82	AE 81-01	7/28/1981	#7125644	Lewis/Chapman/Revere	1025-1045 Grant	Santa Clara	224-38-041	1
81	AE 80-04	7/28/1981	#7125643	Royer	1101-1115 Saxon Park	Santa Clara	224-08-139	1.7
80	AE 81-02	6/25/1981	#7050193	Zavoo Assoc.	1400 Russell	San Jose	104-14-154	0.1
79	AE 80-01	4/29/1981	#7038817	Lille	541 W. Julian	San Jose	259-25-037	0.2
78	AE 80-12	3/21/1981	#7010159	Gaines/Knecht	1753 Busch	Santa Clara	104-12-132	0.1
77	AE 80-08	3/4/1981	#6995781	Sobrato/Beig/Granum	2221 Lawson	Santa Clara	224-44-023/023 parts	4.3
76	AE 80-09	1/28/1981	#6965608	Lambert/Ruber/Schwarz	805-808 Wilson 900 Condon	San Jose	230-48-101/012-023	0.7
75	AE 80-11	1/28/1981	#6965607	Cal/Com Leasing and Development	805 W. Hedding	San Jose	230-04-079	0.7
74	AE 79-40	9/30/1980	#6832645	Alma Properties	1611 Technology	San Jose	230-29-117 parts	10.2
73	AE 78-01	8/18/1980	#6821710	Jenny/Gillette	1130 Duane	Santa Clara	230-29-116	1.2
72	AE 80-08	6/7/1980	#6790254	Casano	264-27-006/008 parts	San Jose	259-38-074	0.1
71	AE 79-31	6/7/1980	#6790252	Clark	3445-3490 Victor	Santa Clara	101-15-073	0.9
70	AE 79-03	6/23/1980	#6790252	Wheat	2705-2761 Lafayette	Santa Clara	224-04-062	0.4
69	AE 79-18	6/23/1980	#6788906	Burden	1675-1740 Wash	Santa Clara	234-12-001-001	3.1
68	AE 79-37	5/28/1980	#6741068	Vito	4000 Creechey	Santa Clara	104-12-208	0.2
67	AE 79-30	5/28/1980	#6741067	Sewen-Lip/Boling Co. of San Francisco	1001 Laurelwood	Santa Clara	104-15-100/101	9.7
66	AE 80-02	5/28/1980	#6741066	Timchitska/Saa	1032 Vermont	San Jose	230-42-082	0.2
65	AE 80-03	4/20/1980	#6719197	Green Valley Corp.	100-149 Alamo 717 Miller	San Jose	259-05-069	1.4
64	AE 79-14	4/20/1980	#6719196	Alves	805 Constock	Santa Clara	224-30-013	0.5
63	AE 79-36	2/28/1980	#6669711	Studer/Hedner	1400 Chestnut	Santa Clara	104-12-181	0.1
62	AE 79-02	2/28/1980	#6669710	Alves	432 Hudson	San Jose	259-13-094 part	0.2
61	AE 79-23	1/20/1979	#6603211	San Jose Office Plaza	1705 N. First	San Jose	230-29-003	3
60	AE 79-22	1/21/1979	#6601106	T&M Joint Venture #3	1899 Russell	Santa Clara	104-14-106	1.5
59	AE 79-25	11/15/1979	#6601798	Souza	2119-2183 Agnew 1802-2188 Hunter	Santa Clara	104-54-052-070	1.1
58	AE 79-16	11/11/1979	#6547959	LK Assoc.	3201 Keller	Santa Clara	101-11-009	2.7
57	AE 81-31	9/17/1979	#6469199	Melrose	88 Broadway	San Jose	101-30-020	1.9
56	AE 79-09	8/17/1979	#6475204	MI Creek Assoc.	3725-3785 W. Hedding	San Jose	259-27-005 part	0.6
55	AE 79-15	8/13/1979	#6468820	Kottlmeier Bay Area	1771-1789 Technology	San Jose	230-29-079/090/090/097	35.2
54	AE 79-10	8/13/1979	#6468819	Ellington	597 W. Taylor	San Jose	259-09-037	0.8
53	AE 79-04	8/13/1979	#6451980	Smith	3051 Thurman	Santa Clara	104-14-021	2.0
52	AE 79-21	8/13/1979	#6451989	Jacobson				